

Windows and doors with high insulation

NEW

forsterunico[®]

In steel and stainless steel



forsterunico[®] Hi

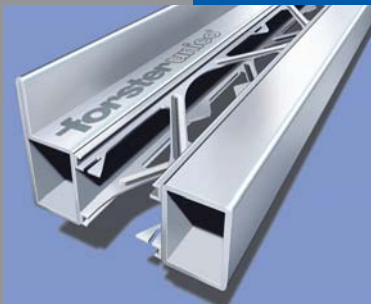
$U_w = 1.0$

forster

STEEL AND STAINLESS STEEL PROFILE SYSTEMS



Steel
Stainless steel



forster unico® Hi

Simply ecological
System Forster unico Hi
for very efficient heat insulating
windows, doors and fixed
screens

Forster unico Hi combines all the benefits of standard Forster unico systems with even higher insulation parameters.

The latest technology, energy efficiency, attractive design and the ecological use of materials interact to achieve responsible and sustainable construction.

Impressively simple

Simple and effective

Forster unico Hi for windows and doors comply with the latest requirements for heat protection, e.g. EnEV 2009 (DE) and SIA 380/1 (CH) for U_w values under $1.3 \text{ W}/(\text{m}^2\cdot\text{K})$.

Simple and variable

With a structural depth of 88 mm, 2- or 3-pane insulated glazing up to 60 mm is integratable – for U_w values of up to $0.9 \text{ W}/(\text{m}^2\cdot\text{K})$.

Simple construction

Only two additional components are needed to make Forster unico into a very efficient heat insulating Forster unico Hi element.

Simply ecological

Forster unico Hi with profiles made of 100% steel need no plastic insulators or fillings in the profile sections. This underlines the ecological design of the system.

Simple and sleek design

Extremely slim profile cross-sections for rooms flooded with light

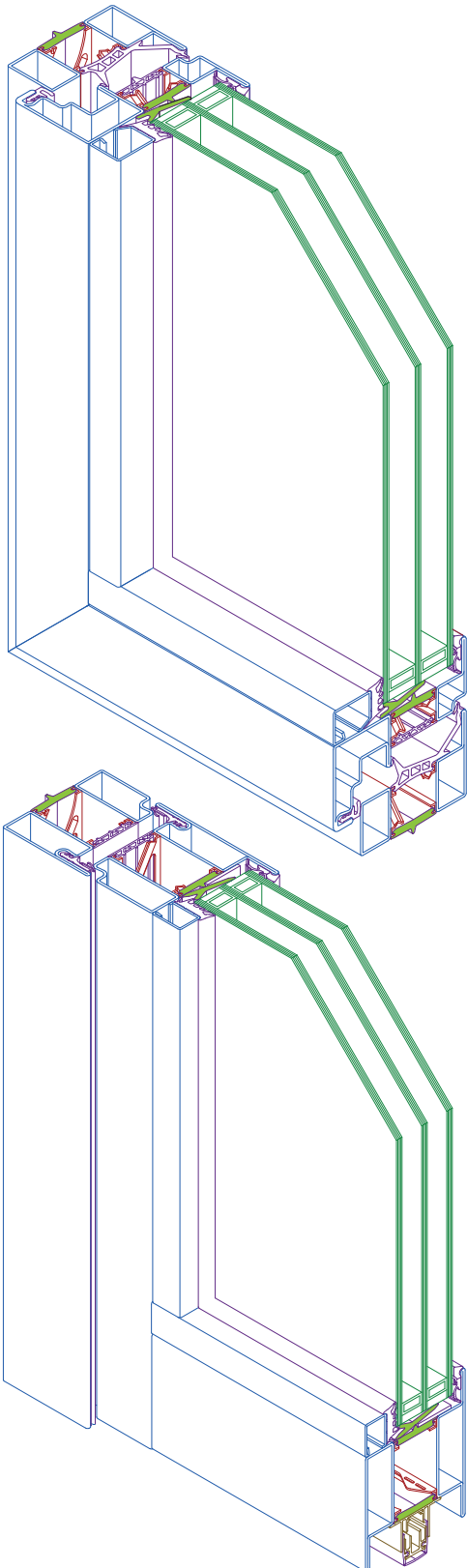
Simply awesome

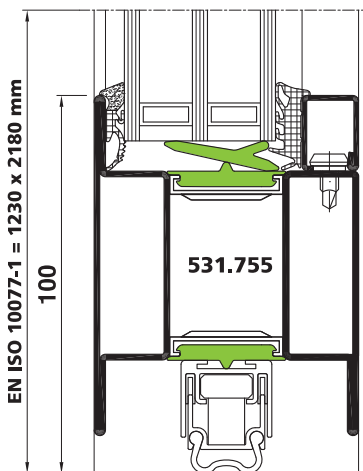
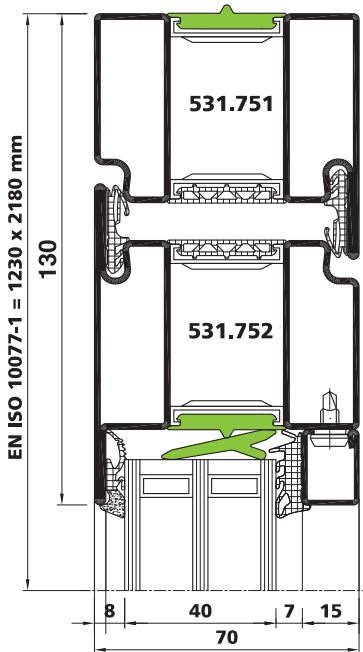
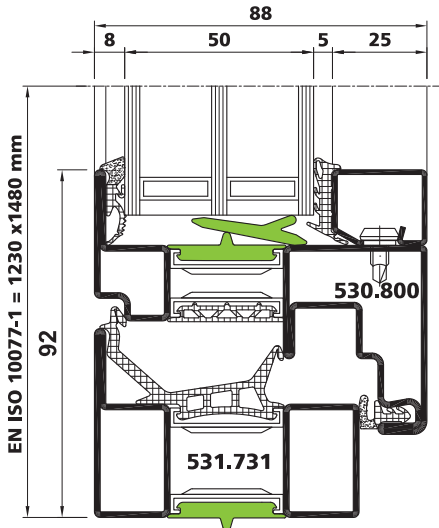
Excellent static parameters for the profiles allow large panes without additional extensions.

Simply safe

- All system requirements tested to EN 14351-1 (CE Marking)
- Burglary resistant RC 1-3 as per EN 1627-30 for windows, doors and fixed screens
- Bullet resistant Class FB4 as per EN 1522 for windows, doors and fixed screens

Simply great.





Window U_w value

Standard sizes as per EN ISO 10077-1: w 1230 x h 1480 mm
Glass U_g 0.5 W/(m²·K) / Glass edge seal Ψ (Psi) 0.04 W/(m·K)

	Stainless steel	Coated steel
Standard EnEV 2009 (DE)	$U_w = 1.3$	$U_w = 1.3$
Standard SIA 380/1 (CH)	$U_w = 1.3$	$U_w = 1.3$
forsterunico® H'	$U_w = 1.0$	$U_w = 1.1$

Fixed screen U_w value

Standard sizes as per EN ISO 10077-1: w 1230 x h 1480 mm
Glass U_g 0.6 W/(m²·K) / Glass edge seal Ψ (Psi) 0.04 W/(m·K)

	Stainless steel	Coated steel
Standard EnEV 2009 (DE)	$U_w = 1.3$	$U_w = 1.3$
Standard SIA 380/1 (CH)	$U_w = 1.3$	$U_w = 1.3$
forsterunico® H'	$U_w = 0.9$	$U_w = 1.0$

Door U_D value

Standard sizes as per EN ISO 10077-1: w 1230 x h 2180 mm
Glass U_g 0.6 W/(m²·K) / Glass edge seal Ψ (Psi) 0.04 W/(m·K)

	Stainless steel	Coated steel
Standard EnEV 2009 (DE)	$U_D = 1.8$	$U_D = 1.8$
Standard SIA 380/1 (CH)	$U_D = 1.3$	$U_D = 1.3$
forsterunico® H'	$U_D = 1.1$	$U_D = 1.2$



forsterunico®



forster

STEEL AND STAINLESS STEEL PROFILE SYSTEMS

Forster Profile Systems
P.O. Box 400
CH-9320 Arbon
Tel. +41 71 447 43 43
Fax +41 71 447 44 78
forster.profile@afg.ch
www.forster-profile.ch



A company in the

AFG
Arbonia-Forster-Holding AG

988342/10153480/3'000/01-11